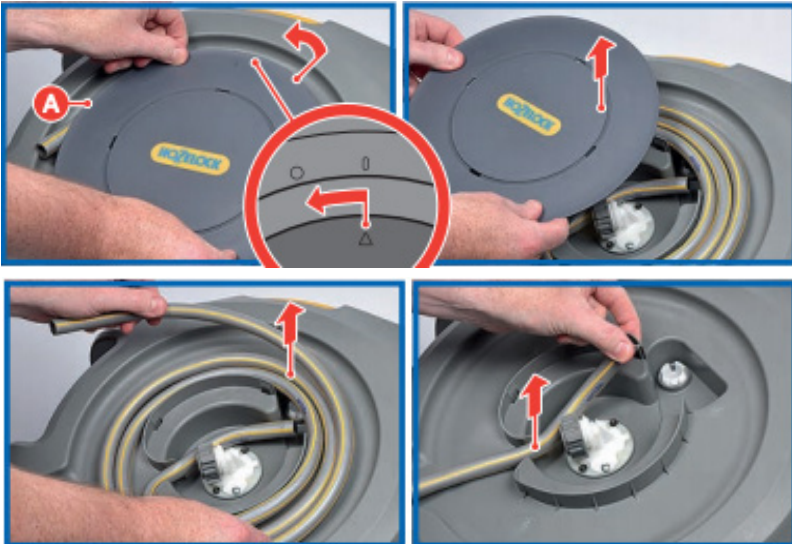




How to change the inlet connector on the Auto Reel

1. Lay the reel on a soft surface with side A uppermost and remove the side disc by twisting the disc anticlockwise and lifting off. Then remove the feeder hose.



2. Two posidrive screws (silver) hold the plate on the hose connector in place. Remove these two screws. **NEVER attempt to remove the other two black security screws!**



3. Remove the grey nut from the NEW inlet, and slide onto the hose.

4. Push the end of the hose into the inlet teeth and tighten the nut. Ensure that the hose is pushed all the way into the connector.



5. Replace the hose connector into the Autoreel and replace the two screws.



6. Re-fit the side disc.

